

TUTORIAL – GRAPETUTORIAL – GRAPE

Posted on **July 08,2013** by **Martina**

FACE:

- La Roche-Posay Toleriane Teint No.13 ([review](#))
- Illamasqua Skin Base No.06 ([review](#))
- MAC Sculpting PRO Powder in Shadowy
- Pupa Luminous Bronze Powder ([review](#))
- Estee Lauder Double Wear Concealer
- Catrice Translucent Mattifying Powder

EYES:

- Make up forever - No.92
- MAC Brule
- MAC Blanc Type
- MAC Vanilla Pigment
- MAC Omega
- Essence Long Lasting Eye pencil in Coolest Chick No.16
- Essence Kajal Pencil No.04 White
- Essence Liquid Eyeliner - Black
- Givenchy Noir Couture Waterproof Mascara ([review](#))
- Misslyn Eyelashes No. 37 + Finger's Lash Glue

LIPS:

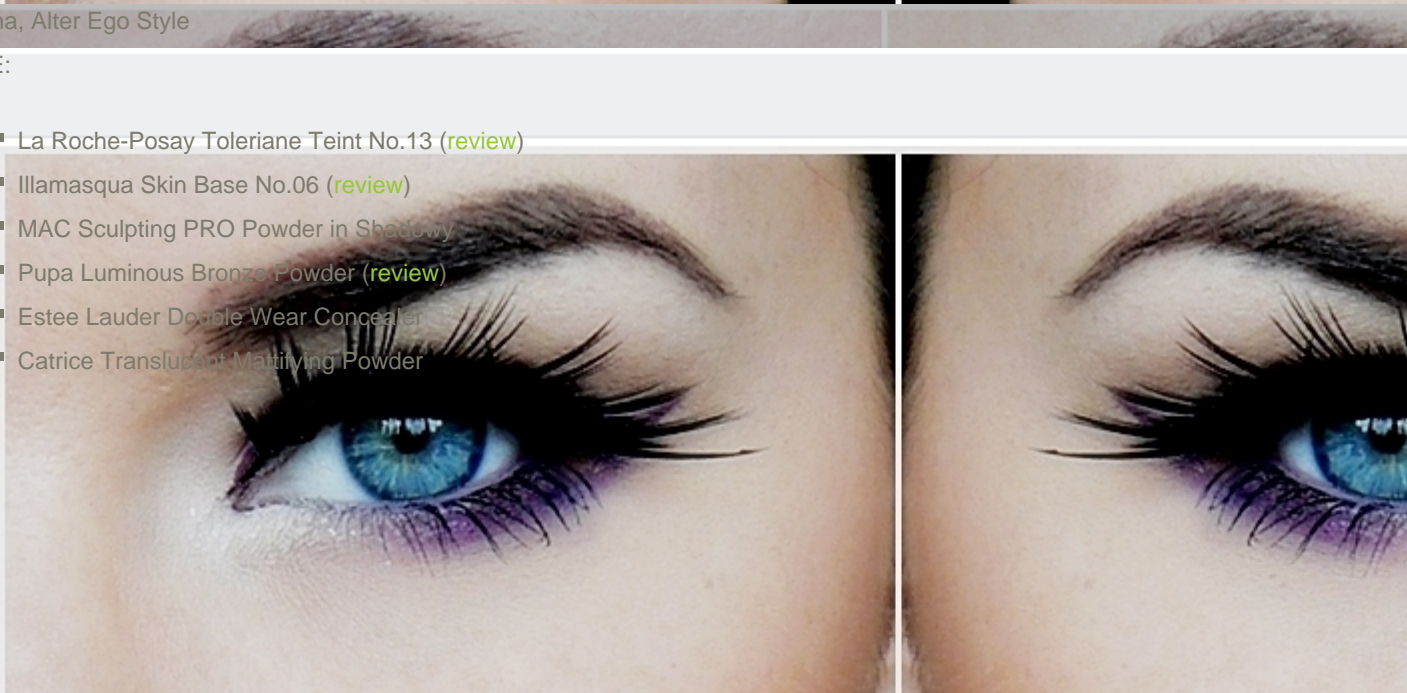
- Catrice The Nuder The better No. 190

Martina, Alter Ego Style

LICE:

- La Roche-Posay Toleriane Teint No.13 ([review](#))
- Illamasqua Skin Base No.06 ([review](#))
- MAC Sculpting PRO Powder in Shadowy
- Pupa Luminous Bronze Powder ([review](#))
- Estee Lauder Double Wear Concealer
- Catrice Translucent Mattifying Powder

O?I:



- Make up forever - No.92
- MAC Brule
- MAC Blanc Type
- MAC Vanilla Pigment
- MAC Omega
- Essence Long Lasting Eye pencil in Coolest Chick No.16
- Essence Kajal Pencil No.04 White
- Essence Liquid Eyeliner - Black
- Givenchy Noir Couture Waterproof Mascara ([review](#))
- Misslyn Eyelashes No. 37 + Finger's Lash Glue

USNE:

- Catrice The Nuder The better No. 190

Martina, Alter Ego Style

Posted in: TUTORIAL | | With 10 comments
