

# MAKEUP FOR FALL 2013

Posted on **October 01, 2013** by **Martina**

Odlu?ila sam napraviti seriju jesensko - zimskih makeup look-ova prema trendovima u ovoj nadolaze?oj sezoni. Neki od look-ova koje u narednim danima mo?ete o?ekivati su metalik look o?i, crveni ru? , fashion tamne o?i i usne, zanimljivi eyeliner, crveno-ljubi?aste o?i i barem jedan naravno za no? vještica. Nadam se da vam ne?e biti dosadno u listopadu!

FACE:

- La Roche-Posay Toleriane Teint No.13 ([review](#))
- MAC Pro Sculpting Powder in Shadowy
- MAC Cream Color Base in Luna ([review](#))
- Catrice Translucent Mattifying Powder
- Artdeco Camouflage No. 08
- Avon Blush in Plum

EYES:

- MAC Brule
- MAC Wedge
- MAC Mulch
- Maybelline Eye Studio Drama Gel Eyeliner
- Maybelline Lashes Drama Mascara

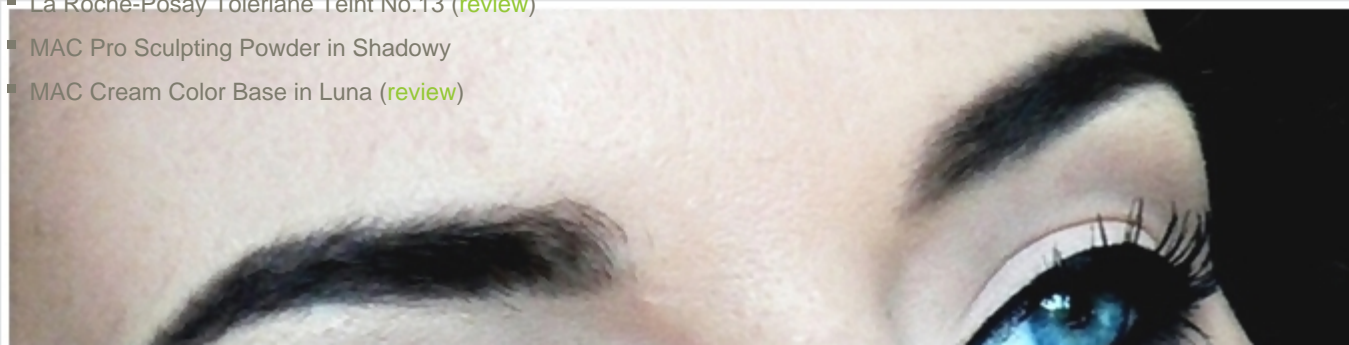
LIPS:

- Catrice Lip Liner in No.060 Very Berry
- Shiseido Lipstick SL 15

Imate prijedloge što bi htjele vidjeti? Da li je potreban tutorijal? Koji look je vas zaintrigirao ove sezone? Martina, Alter Ego Style Odlu?ila sam napraviti seriju jesensko - zimskih makeup look-ova prema trendovima u ovoj nadolaze?oj sezoni. Neki od look-ova koje u narednim danima mo?ete o?ekivati su metalik look o?i, crveni ru? , fashion tamne o?i i usne, zanimljivi eyeliner, crveno-ljubi?aste o?i i barem jedan naravno za no? vještica. Nadam se da vam ne?e biti dosadno u listopadu!

LIPS:

- La Roche-Posay Toleriane Teint No.13 ([review](#))
- MAC Pro Sculpting Powder in Shadowy
- MAC Cream Color Base in Luna ([review](#))



- Catrice Translucent Mattifying Powder
- Artdeco Camouflage No. 08
- Avon Blush in Plum

O?I:

- MAC Brule
- MAC Wedge
- MAC Mulch
- Maybelline Eye Studio Drama Gel Eyeliner
- Maybelline Falsies Drama Mascara

USNE:

- Catrice Lip Liner in No.060 Very Berry
- Shiseido Lipstick SL 15

Imate li prijedloge što bi htjele vidjeti? Da li je potreban tutorijal? Koji look je vas zaintrigirao ove sezone? Martina, Alter Ego Style

*Posted in: TUTORIAL | Tagged: Artdeco Camouflage, Avon Blush In Plum, Catrice Lip Liner In No.060 Very Berry, La Roche-Posay Toleriane Teint, MAC Brule, MAC Cream Color Base In Luna, MAC Mulch, MAC Pro Sculpting Powder In Shadowy, MAC Wedge, Makeup Fall 2013, Maybelline Eye Studio Drama Gel Eyeliner, Maybelline Falsies Drama Mascara, Shiseido Lipstick SL 15 | With 16 comments*

---