

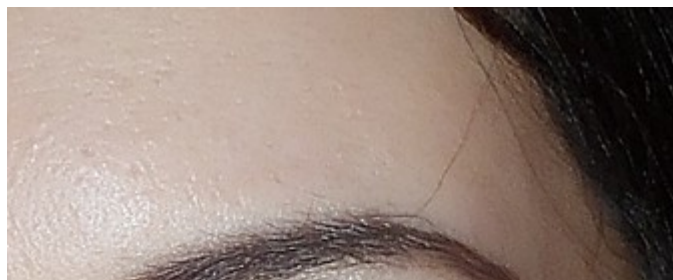
HYPNOSE WITH BLUE EYES HIPNOTIZIRAJTE PLAVIM O?IMA

Posted on **June 27,2012** by *Martina*



To recreate this look you will need an ash tone pencil for

eyebrows and eyes, dark brown eye pencil, highlight for corners of the eyes and brow bones, black mascara, peach-rose



rekreirale ovaj look, potrebna Vam je olovka pepeljastog tona, tamno sme?a olovka, sjenilo za posvjetljivanje unutarnjih kuteva o?iju te luka ispod obrva, crna maskara, breskvasto-roskasto rumenilo i sli?na nijansa sjajila za usne. (more...)

Posted in: TUTORIAL | | With 0 comments
